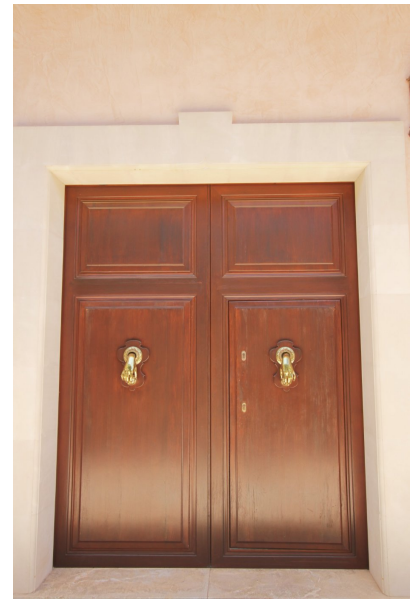


## 6 bedroom Detached Villa in Llucmajor

Ref: NRE203

4,800,000€



**Property type :** Detached Villa

**Location :** Llucmajor

**Bedrooms :** 6

**Bathrooms :** 6

**Year built :** 2002

**Swimming pool :** Private

**Orientation :** West

**Views :** Sea views

**House area :** 982 m<sup>2</sup>

**Beach :** 50 m

- ✓ Garden
- ✓ Heating
- ✓ Central heating
- ✓ Lift
- ✓ Airconditioning
- ✓ Gymnasium
- ✓ Fireplace
- ✓ Satellite dish
- ✓ Terrace
- ✓ Double garage
- ✓ Alarm system
- ✓ Barbecue
- ✓ Solarium

This stunning first sea line villa is located in Son Veri Nou, one of the best residential areas on the coast of Mallorca, right by the sea and only 15 minutes from the centre of Palma.

The villa features spectacular sea views and direct private access to the promenade, as well as high ceilings, spacious rooms, finishes and materials of the highest quality. The property with 6 bedrooms and 6 bathrooms is situated on a plot of approximately 1050 m<sup>2</sup>. The 982 m<sup>2</sup> built-up area is divided into 3 floors, all connected by stairs and a lift.

The ground floor consists of an impressive entrance hall with high ceilings, a large living room with sea views and access to the covered veranda, the heated salt water pool and the garden. A separate dining room, a library, a bedroom with en-suite bathroom, a fantastic 40 m<sup>2</sup> kitchen with storage and a laundry room complete this floor.

On the first floor you will find 4 large bedrooms, 4 bathrooms (3 en suite), a dressing room and a large living room with fireplace. In addition, here you have further access to a 50 m<sup>2</sup> terrace with spectacular sea views.

The spacious roof terrace offers a barbecue area for an entertaining evening and fantastic views of the entire bay of Palma.

The property further has a large basement with a cinema, a games room as well as a billiards room and a garage for up to 4 vehicles. Other features include automatic irrigation systems, a private water source, an alarm system, 2 fireplaces, a lift and central heating and central air conditioning throughout the house.